

Port Laredo

TEXAS



Top 20 U.S. Customs Districts 2022



10 | Seattle
Total Trade \$157.01

14 | Low-Value Shipments
Total Trade \$100.62

6 | Detroit
Total Trade \$299.75

16 | Buffalo
Total Trade \$96.38

2 | New York
Total Trade \$522.37

11 | San Francisco
Total Trade \$153.56

5 | Chicago
Total Trade \$388.51

18 | Philadelphia
Total Trade \$91.36

1 | Los Angeles
Total Trade \$523.93

9 | Cleveland
Total Trade \$187.12

20 | Norfolk
Total Trade \$85.01

8 | Atlanta/Savannah
Total Trade \$226.42

17 | San Diego
Total Trade \$94.03

19 | Dallas
Total Trade \$90.22

15 | Charleston
Total Trade \$99.00

12 | El Paso
Total Trade \$143.61

7 | New Orleans
Total Trade \$279.86

3 | Laredo
Total Trade \$412.64

4 | Houston
Total Trade \$388.61

13 | Miami
Total Trade \$136.64

Laredo is # 3 in Customs District's in the U.S. with \$412.64 billion in trade, surpassed only by Los Angeles and New York.

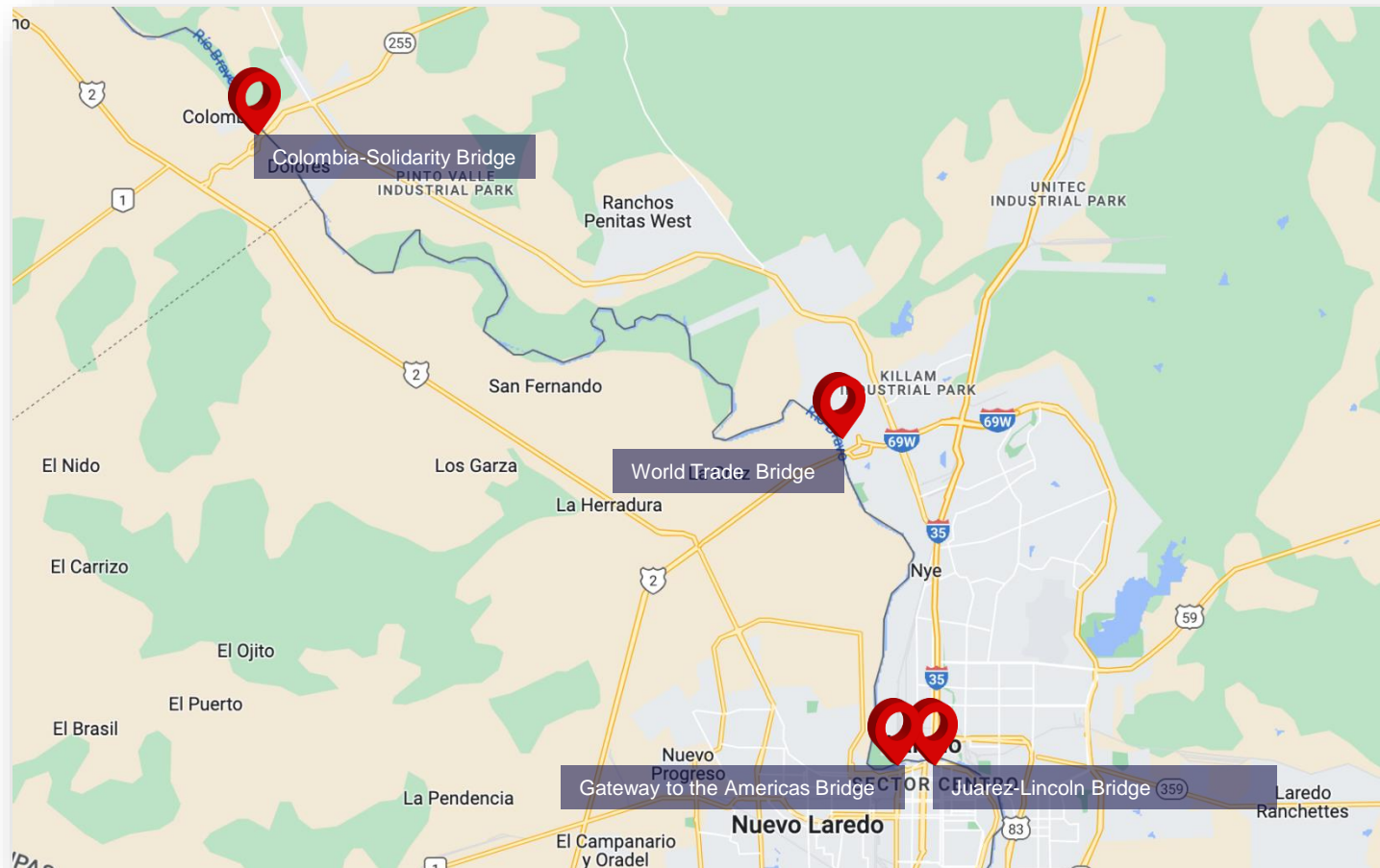


Top 10 U. S. Ports of Entry - 2022



Rank	Port of Entry	Trade in Billion \$\$\$
1	Chicago O'Hare Int'l Airport	\$330
2	Port of Los Angeles, CA	\$312
3	Port of Laredo, TX	\$299
4	Port of Newark, NJ	\$260
5	JFK Int'l Airport, NY	\$258
6	Port of Houston, TX	\$241
7	Port of New Orleans, LA	\$163
8	Detroit Ambassador Bridge, MI	\$158
9	Los Angeles Int'l Airport, CA	\$153
10	Port of Savannah, GA	\$148

City of Laredo Bridge System



- 3 Bridges - State of Tamaulipas
- 1 Bridge - State of Nuevo Leon
- \$74 million in revenues:
 - 2% pedestrian
 - 12% non-commercial
 - 86% commercial

- Daily Traffic
 - 18,000 Pedestrian (N/S)
 - 28,000 Non-Commercial (N/S)
 - 15,000 Commercial (N/S)



Gateway to the Americas Bridge (bridge I) Lincoln-Juarez Bridge (bridge II)



Bridge I Daily Traffic (North/South):

- Process 100% Pedestrians
- Process 20% of Non-commercial vehicles

Bridge II Daily Traffic (North/South):

- Process 78% of Non-commercial vehicles

Colombia Solidarity Bridge



- Built 1991
- Process 2% of Non-commercial
- Process 15% of Commercial Traffic
- Ranked No. 3 in Laredo Customs District
- Can handle much greater traffic



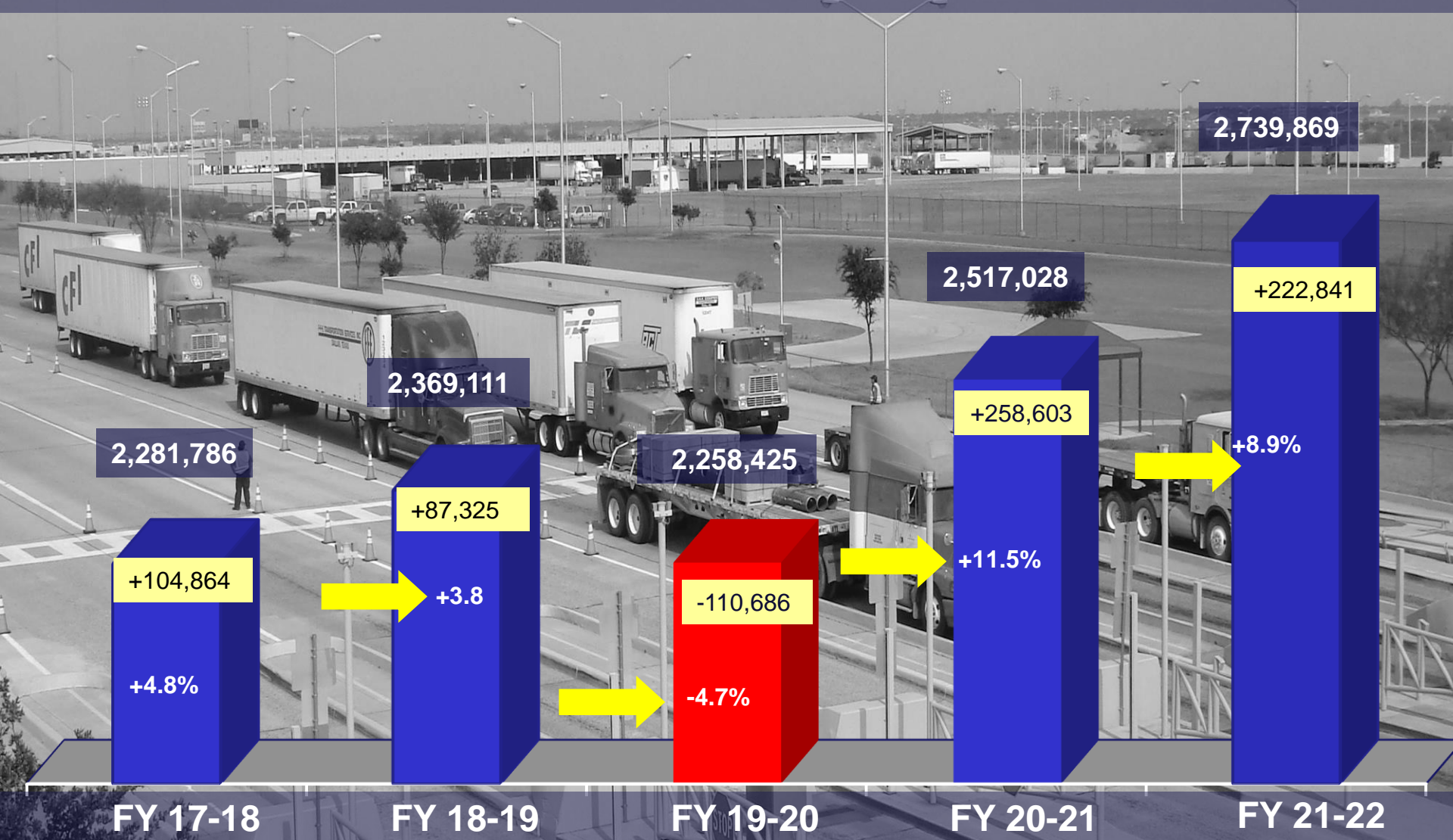
World Trade Bridge



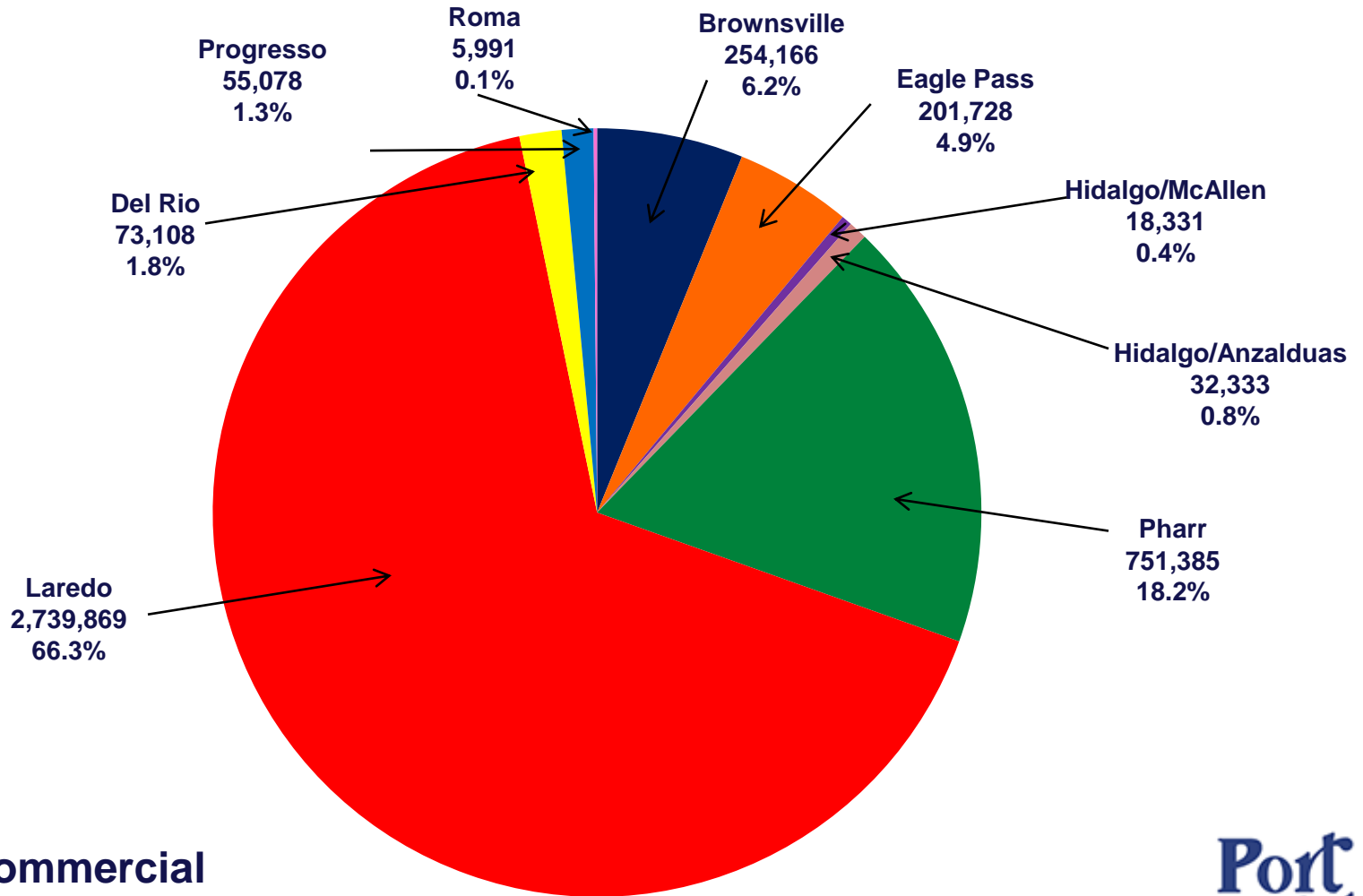
- 100% Commercial
- Built 2000 (yr.)
- Process 14,000 commercial vehicles
- 85% of Commercial traffic



Yearly Commercial Traffic Southbound



Border City Southbound Commercial Traffic FY 2022



**Total Commercial
Traffic
4,131,989**



Automatic Vehicle Identification System (AVI)



- Toll Charged Electronically
- No cash handled at lanes
- Electronic Sticker Cards (RFID)
- 16 seconds to weigh & charge each vehicle



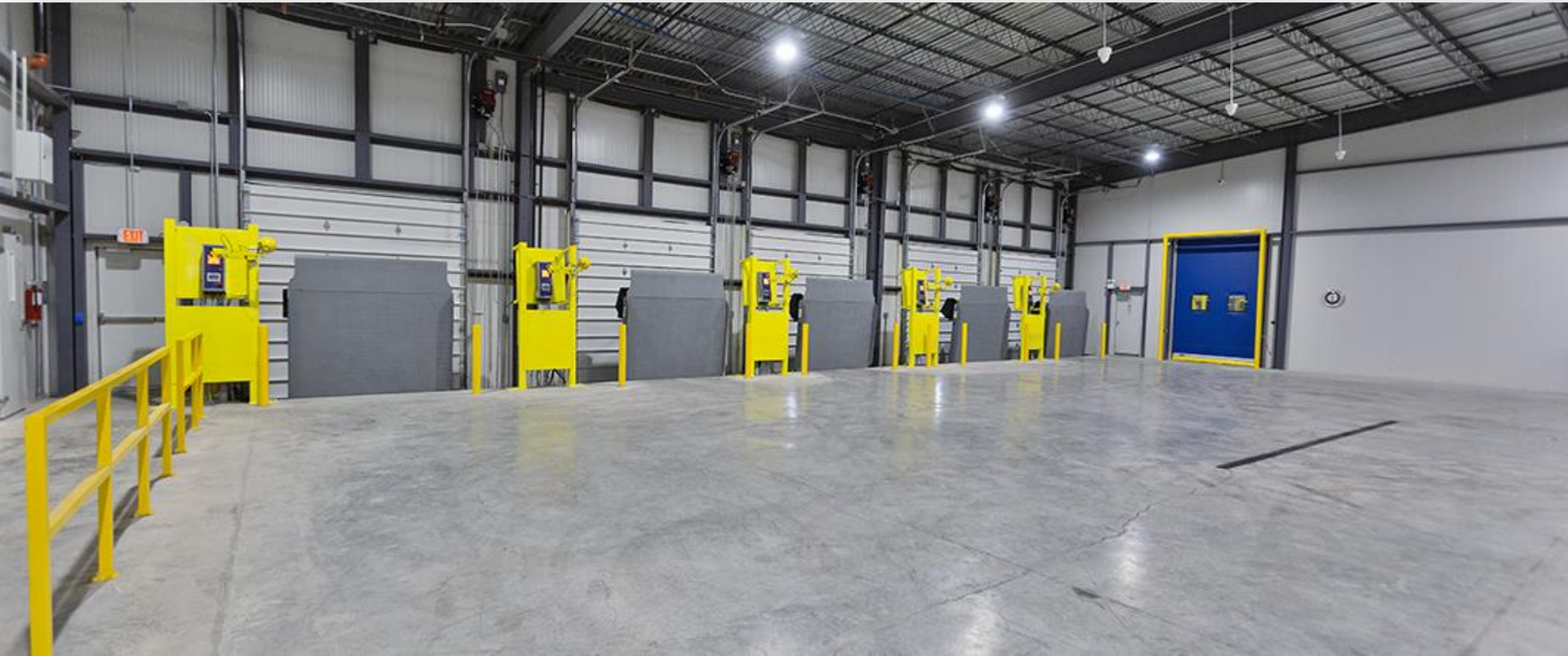
Infrastructure

World Trade Bridge Inspection Station Expansion Project



- \$5.4 million investment
- 7 New Primary Lanes
- 2 New Secondary Lanes
- 1 New Exit Lane
- Wait times reduced by half
- Prepare for future growth

Refrigerated Inspection Facilities



- \$2.0 million investment
- Approx. 6,000 sq. ft. (2 - Facilities)
- Attract more trade
- Mexico, Central America, South America

- Protect goods from heat, dirt, bugs, etc.
- Inspect 6 trucks at one time
- Opened July 2012



World Trade Bridge Hazardous Material Bridge Span Retrofit Project



- \$1 million investment

World Trade Bridge Hazardous Material Offsite Containment Facility



- \$1.8 million investment

World Trade Bridge FAST Lane Relocation Project



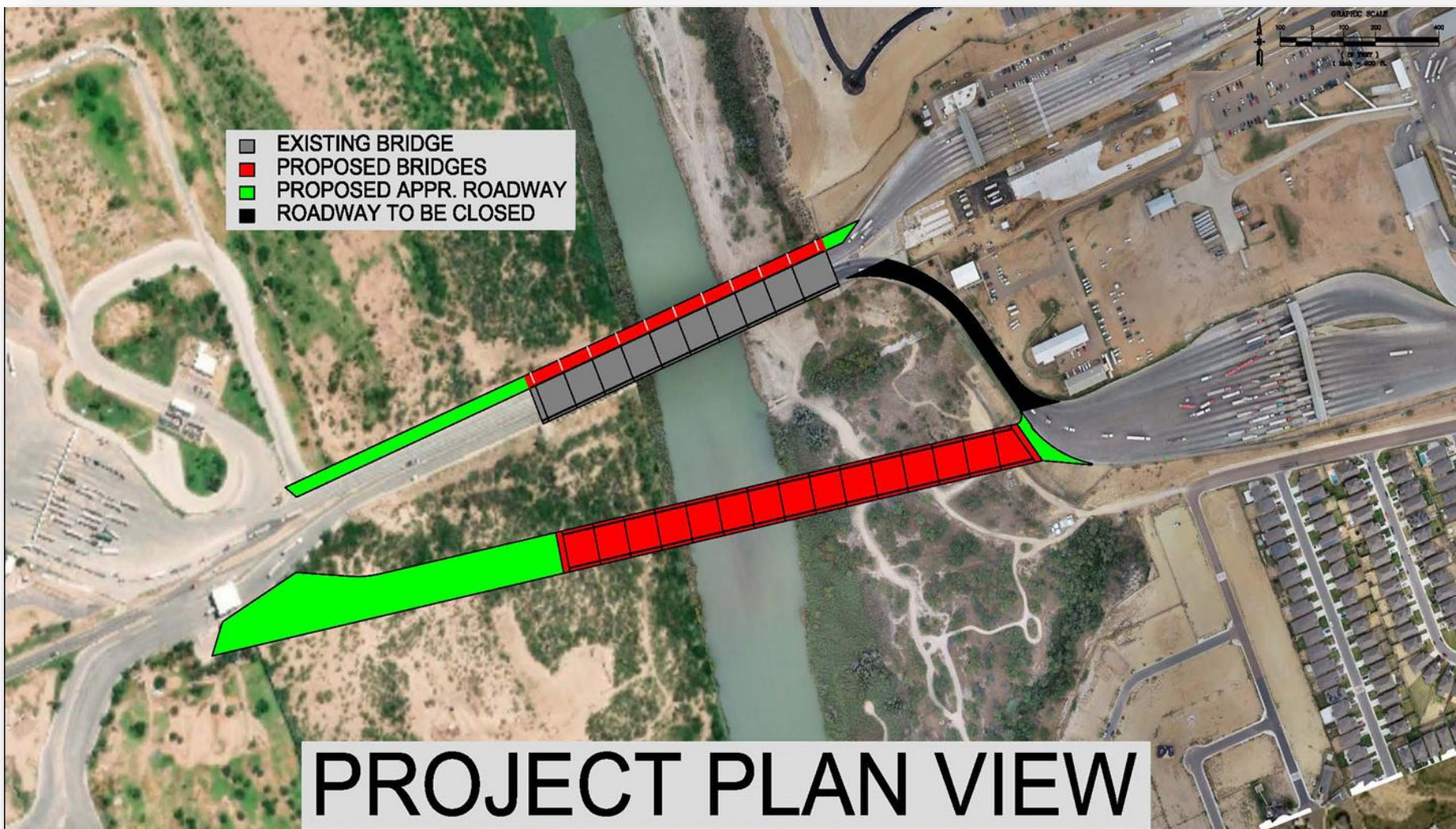
Lane Widening (TxDOT) I69W / Loop 20





Future Bridge Projects

World Trade Bridge Expansion Project



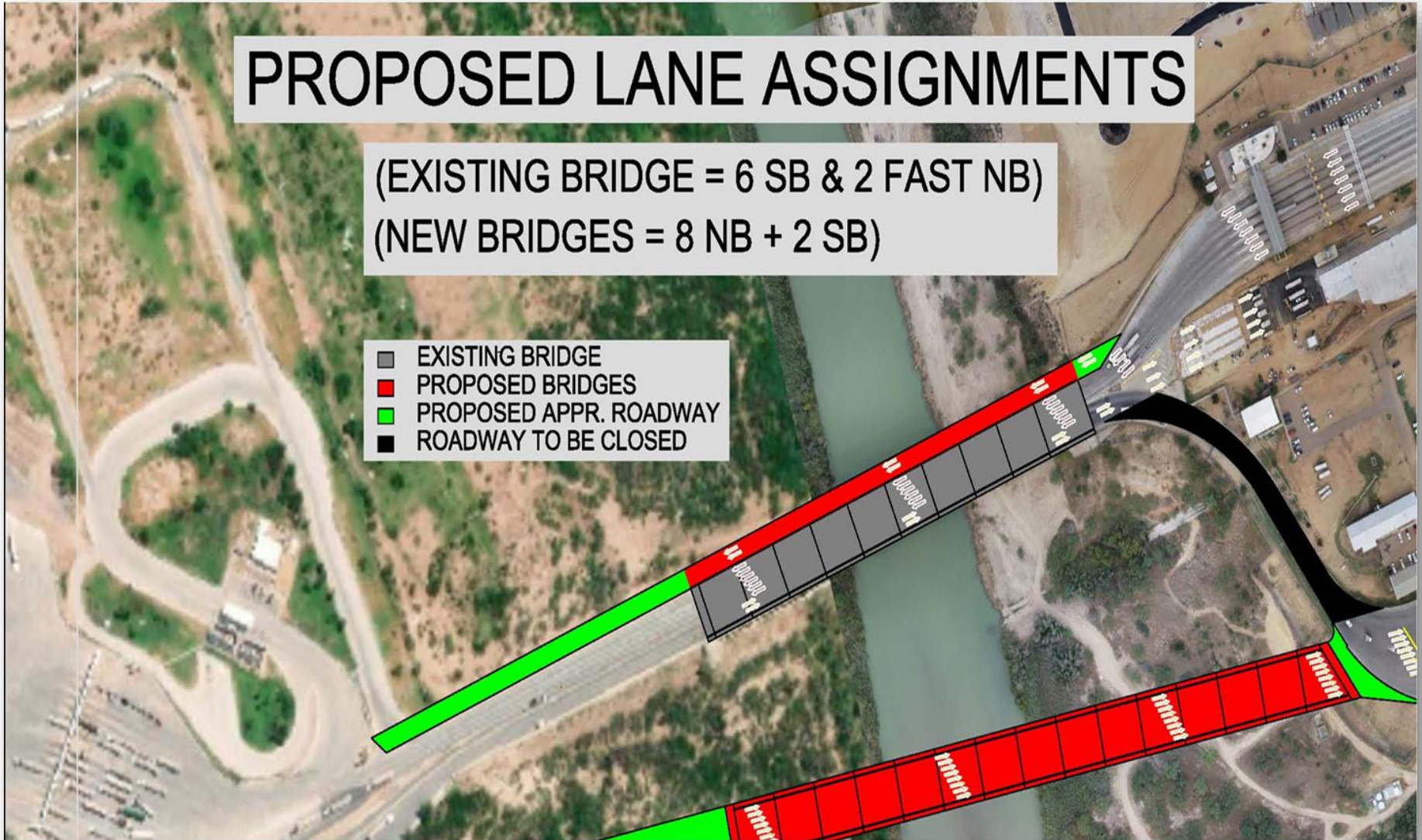
World Trade Bridge Expansion Project



PROPOSED LANE ASSIGNMENTS

(EXISTING BRIDGE = 6 SB & 2 FAST NB)
(NEW BRIDGES = 8 NB + 2 SB)

- EXISTING BRIDGE
- PROPOSED BRIDGES
- PROPOSED APPR. ROADWAY
- ROADWAY TO BE CLOSED





Port Laredo Thank you.
TEXAS

