



LOGISTIC CITY



Port
Laredo
TEXAS



CODEFRONT



LOGISTIC HUB



Port
Laredo
TEXAS



Welcome to Aduana Nuevo Nuevo León—the fastest, most connected crossing between Mexico and the U.S.

With state-of-the-art technology, crossings take as little as 5 minutes with the Unified Cargo Processing Program, backed by seamless routes linking Nuevo Leon directly to South Texas.

The future of efficient trade starts here.



ADUANA NUEVO NUEVO LEÓN



PORT COLOMBIA-LAREDO! THE FASTEST, SAFEST AND EFFICIENT CROSSING BORDER IN MEXICO



LIVE STREAMING CAMERAS



FASTER

SAFER

BETTER

STRATEGIC LOCATION AND CONNECTIVITY TO THE I35 HIGHWAY

NUEVO LEON'S BORDER WITH TEXAS

14 KILOMETERS OF BORDER

8000 DAILY CROSSINGS

ISO 28000 CERTIFICATION

UNIFIED CARGO PROCESSING

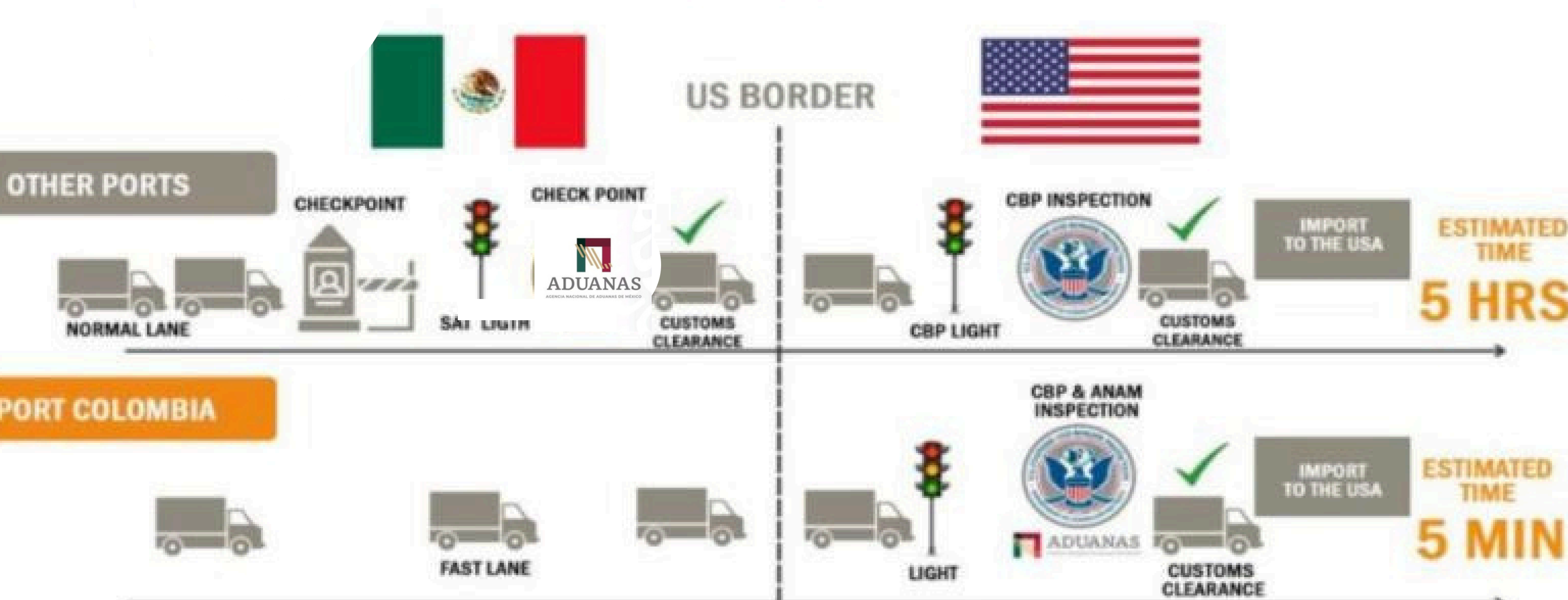
CARGO CROSSING 45 MIN -1 HR



UNIFIED CARGO PROCESSING



Port Laredo TEXAS



ONE INSPECTION BY CBP & ANAM AUTHORITIES





UNIQUE BENEFITS



Port
Laredo
TEXAS



HAZMAT



**WIDE LOADS
CARGO**



**HIGH VOLUME
TRAFFIC
CAPACITY**



**BONDED
WAREHOUSES**



UNIQUE BENEFITS



Port
Laredo
TEXAS



24/7 EMERGENCY
SERVICES
PHONE: 867 734 01 49



ROAD
ASSISTANCE



MEDICAL CLINIC



REST AREA



INDUSTRIAL
PARK



ELECTRIC
CHARGER

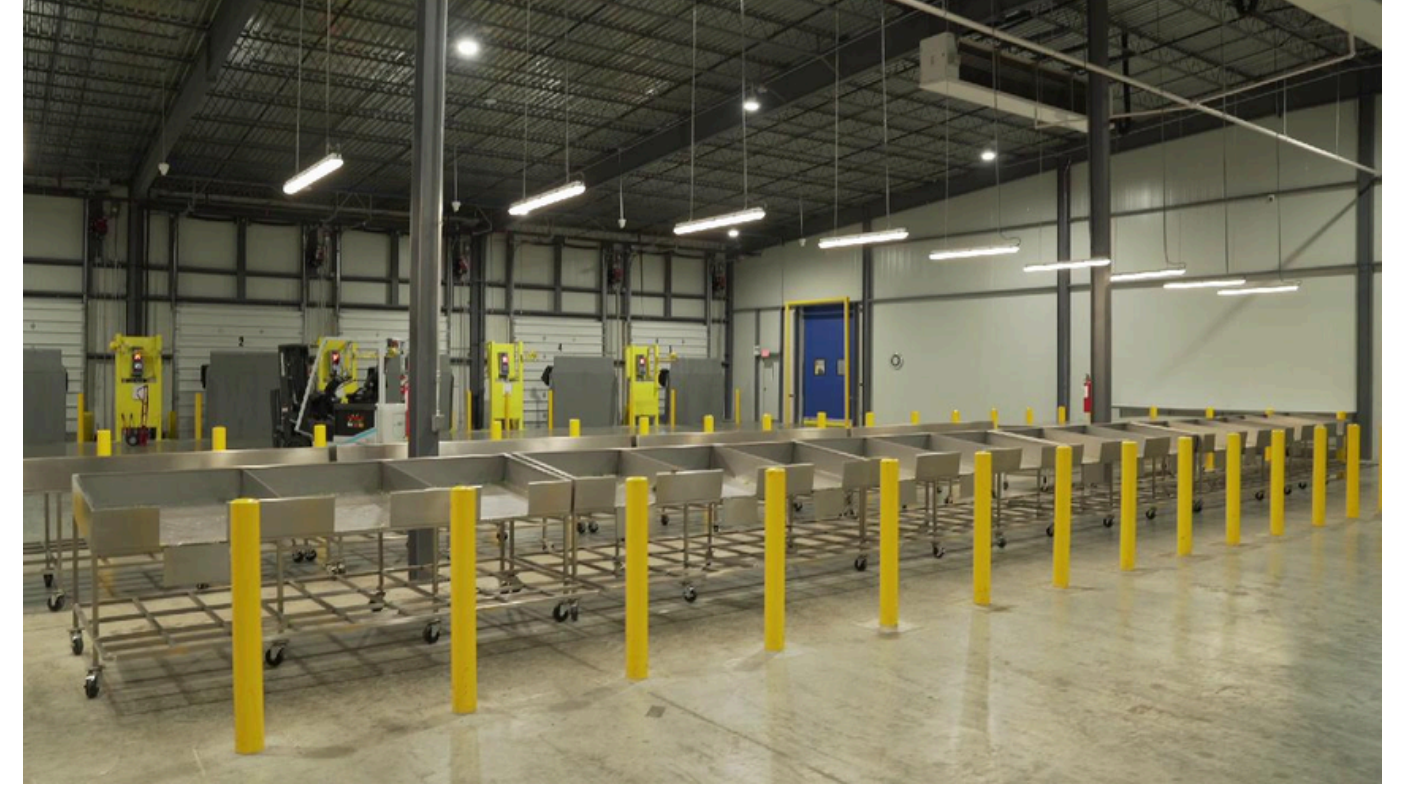


BI-NATIONAL JOINT INSPECTION FACILITY



SERVICES:

- **CBP, ANAM, AND SENASICA INTERNATIONAL INSPECTION POINT**
- **20,000 SQUARE FEET OF TEMPERATURE-CONTROLLED AND CROSS-DOCK WAREHOUSE.**
- **REVIEW WITH CBP-AQI AND SENASICA AUTHORITIES**
- **CERTIFIED TRUCK SCALE**





OTHER BENEFITS



Port
Laredo
TEXAS

Strategic Alliances

A/C Warehouse

Prepaid Interpass
Discount

Ongoing Support

Topnotch Technology





ROAD CONNECTIVITY



Port
Laredo
TEXAS



Laredo, TX / Dallas, TX
445 mi - 6 h 30 min

Laredo, TX / Houston, TX
315 mi - 5 h 20 min

Laredo, TX / San Antonio, TX
157 mi - 2 h 30 min

Laredo, TX / Austin, TX
236 mi - 3 h 40 min

Guadalajara, Jal. / Colombia-Laredo, NL.
653 mi - 11 h 50 min

Querétaro, Qro. / Colombia-Laredo, NL.
595 mi - 12 h 30 min

Guanajuato, Gto. / Colombia-Laredo, NL.
574 mi - 10 h

CDMX / Colombia-Laredo, NL.
717 mi - 13 h 10 min



MAIN CUSTOMERS



Port Laredo TEXAS



Driscoll's
Only the Finest Berries™



Sigma



JOHN DEERE



DAIMLER



SCHEIBER



TOYOTA



Alcon



Honeywell amazon



Mondelēz International



FedEx

P&G





CARRIER CUSTOMERS



Port Laredo TEXAS





**INTERNATIONAL
CUSTOMS &
HIGHWAY MASTER
PLAN**



MASTER PLAN



Highway infrastructure from Federal Highway 57 to the Northern Border- Aduana Nuevo Nuevo León.

- **Interserrana State Highway**

Connecting Nuevo León from South to North, capturing manufacturing and fresh produce exports from the Center, Bajío and South of Mexico, taking them to Texas and the entire United States.

- **Beltway of the Metropolitan Area of Monterrey**

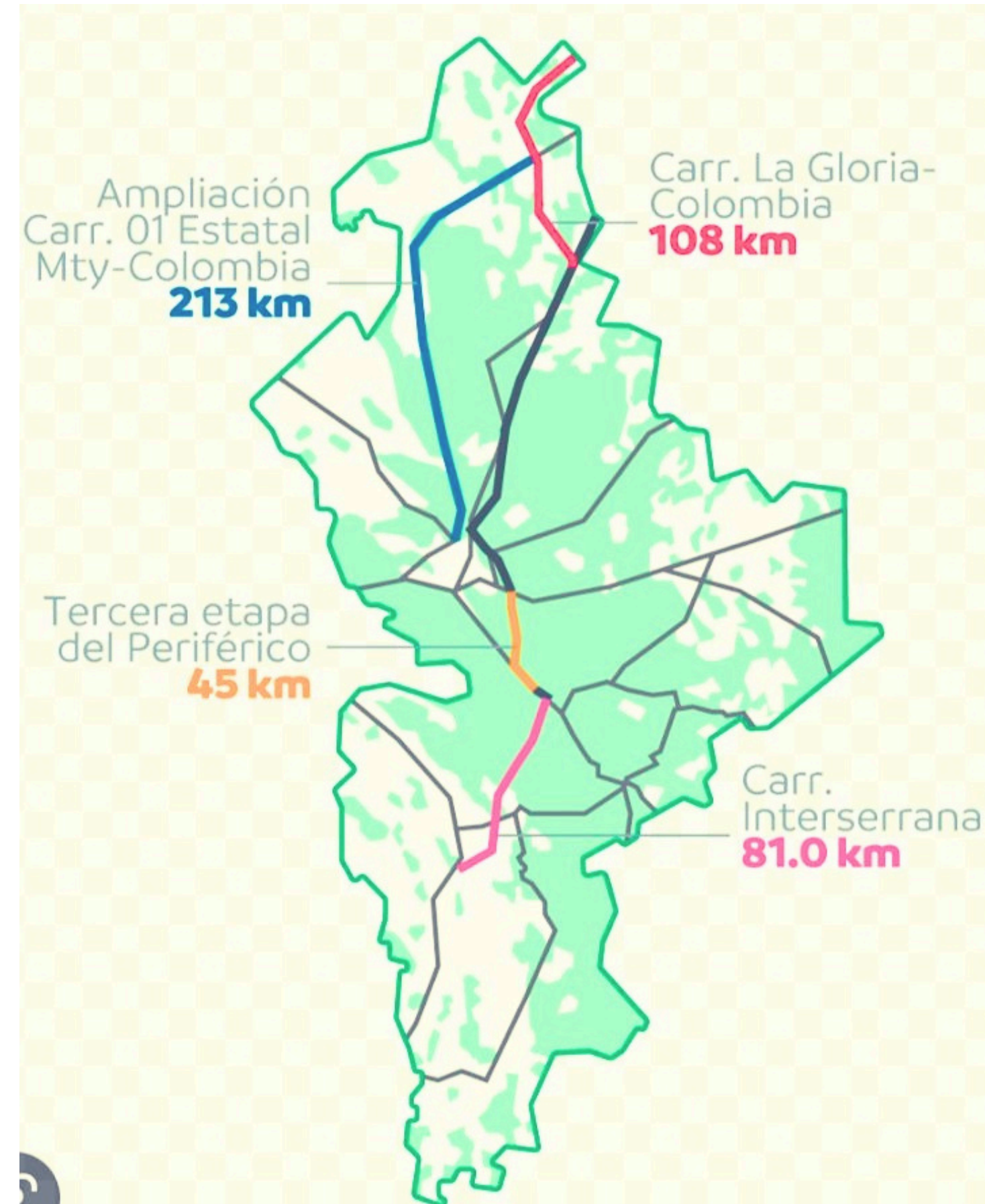
This highway is complemented by the Interserrana, connects Mexico with Aduana Nuevo Nuevo León and the United States, and allows transportation to avoid the Metropolis of Monterrey.

- **La Gloria-Colombia State Highway**

Connecting the highway to Nuevo Laredo with Colombia, reinforcing our Brotherhood. Both as strategic partners of Laredo, Texas.

- **Expansion of the State Highway 1 from Monterrey to Colombia**

This modernization will connect Colombia and the United States, with companies and travelers from Monterrey, and with Salinas Victoria, Nuevo León, the pole of Northeast Mexico with the greatest attraction for foreign investment.





HOUSING COMPLEX



Port
Laredo
TEXAS



Recently inaugurated, this is the first housing complex that a Mexican authority offers free of charge to companies operating within the customs area.



EXPANSION FROM 2 TO 4 LANES OF FEDERAL HIGHWAY MEX -002, PIEDRAS NEGRAS - NUEVO LAREDO (LA RIBEREÑA)



Expansion of Highway Mex-002 "La Ribereña" from 1 to 2 paved lanes in each direction:

- A lane width of 3.5 meters
- Exterior shoulders of 2.5 meters per direction
- A central dividing strip of 1 meter, over a length of 630 linear meters.





EXPANSION FROM 2 TO 4 LANES OF FEDERAL HIGHWAY MEX -002, PIEDRAS NEGRAS - NUEVO LAREDO (LA RIBEREÑA)



EXPANSION OF LA GLORIA - COLOMBIA LA RIBEREÑA INTERSECTION

BEFORE



EXPANSION OF LA GLORIA - COLOMBIA LA RIBEREÑA INTERSECTION

AFTER





CONCRETE RECONSTRUCTION OF THE INTERNATIONAL BRIDGE LANES

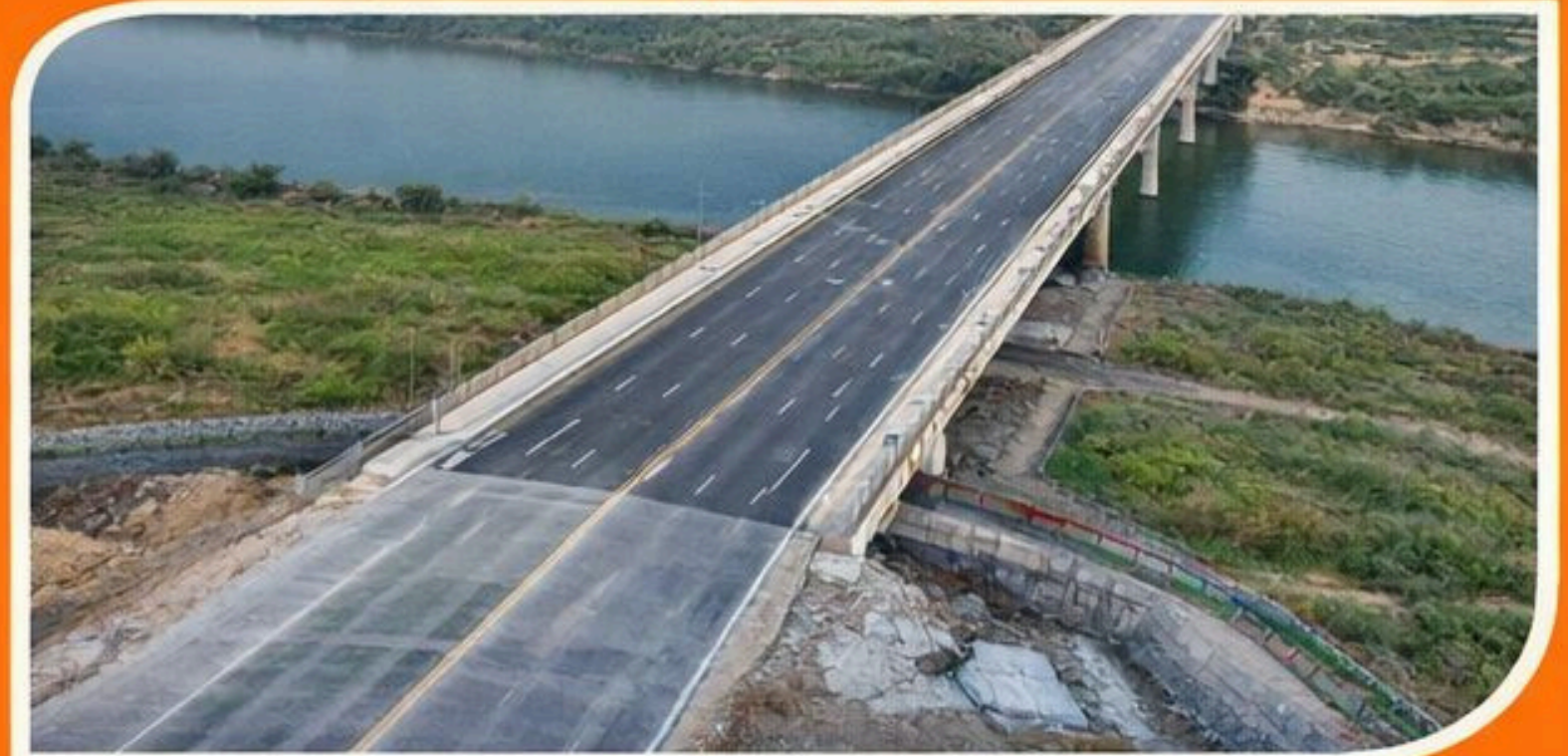


RESTORE THE **SAFETY, FUNCTIONALITY, AND DURABILITY** OF THE ROAD TO ENSURE **SAFE AND EFFICIENT** VEHICULAR TRAFFIC, WITH THE AIM OF **MODERNIZING AND MAINTAINING** IN OPTIMAL CONDITIONS **ONE OF THE MOST IMPORTANT BORDER CROSSINGS** IN THE NORTHEAST OF THE COUNTRY

BEFORE



AFTER





NEW ENTRANCE



Port
Laredo
TEXAS





PAISANO OFFICE



NEW OFFICE FOR PAISANO'S SERVICE AND PARKING LOT.



SERVICES:

- SAFE PARKING.
- FREE WI-FI.
- RESTROOMS.
- ROADSIDE ASSISTANCE.
- EMERGENCY ASSISTANCE.
- TOURIST INFORMATION.
- STATE POLICE FUERZA CIVIL CARAVANS



STATE POLICE FUERZA CIVIL HEAD QUARTERS





6 TO 8 LANE EXPANSION





TOLL BOOTHS



Port
Laredo
TEXAS



EXPANSION OF
NEW
TOLL
BOOTHS
, FROM 7
TO 13



CHECKPOINT



Port
Laredo
TEXAS





THE GLORIA-COLOMBIA HIGHWAY



Port
Laredo
TEXAS





NEW INTERNATIONAL BRIDGES



White House Presidential Permits



PRESIDENTIAL ACTIONS

Presidential Permit Authorizing the City of Laredo, Texas, to Expand and Continue to Maintain, and Operate a Vehicular Border Crossing at the Laredo-Colombia Solidarity International Bridge Land Port of Entry

Presidential Memoranda | June 13, 2025

PRESIDENTIAL ACTIONS

Presidential Permit Authorizing Green Corridors, LLC, to Construct, Maintain, and Operate a Commercial Elevated Guideway Border Crossing Near Laredo, Texas, at the International Boundary Between the United States and Mexico

Presidential Memoranda | June 9, 2025





**INTERNATIONAL
CUSTOMS &
HIGHWAY MASTER
PLAN**



FEDERAL PLATFORM EXPANSION



Port
Laredo
TEXAS

IMPORT PLATFORM



EXPORT PLATFORM





ANAM DORMS AND NEW BANJERCITO OFFICES



ADUANA NUEVO NUEVO LEÓN

CARGO HOURS

PASSENGER HOURS

MONDAY - FRIDAY

8:00 AM - 10:30 PM

SATURDAY

8:00 AM - 4:00 PM

SUNDAY

EXPORT

08:00 AM - 3:00 PM

MONDAY - SUNDAY

8:00 AM - 12:00 AM

SPECIAL REQUESTS FOR
IMPORTS

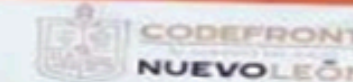
CODEFRONT

PUENTE COLOMBIA
LA FRONTERA DE NUEVO LEÓN

Cruza Rápido
y Seguro

BIENVENIDO

¡DISFRUTA TU VIAJE!





THANK YOU!

**LIC. DEVORAH KARREN
INTERNATIONAL AFFAIRS DIRECTOR FOR THE STATE OF NUEVO LEÓN
& PORT COLOMBIA - LAREDO PROMOTION DIRECTOR.**

devorah.karren@nuevoleon.gob.mx

